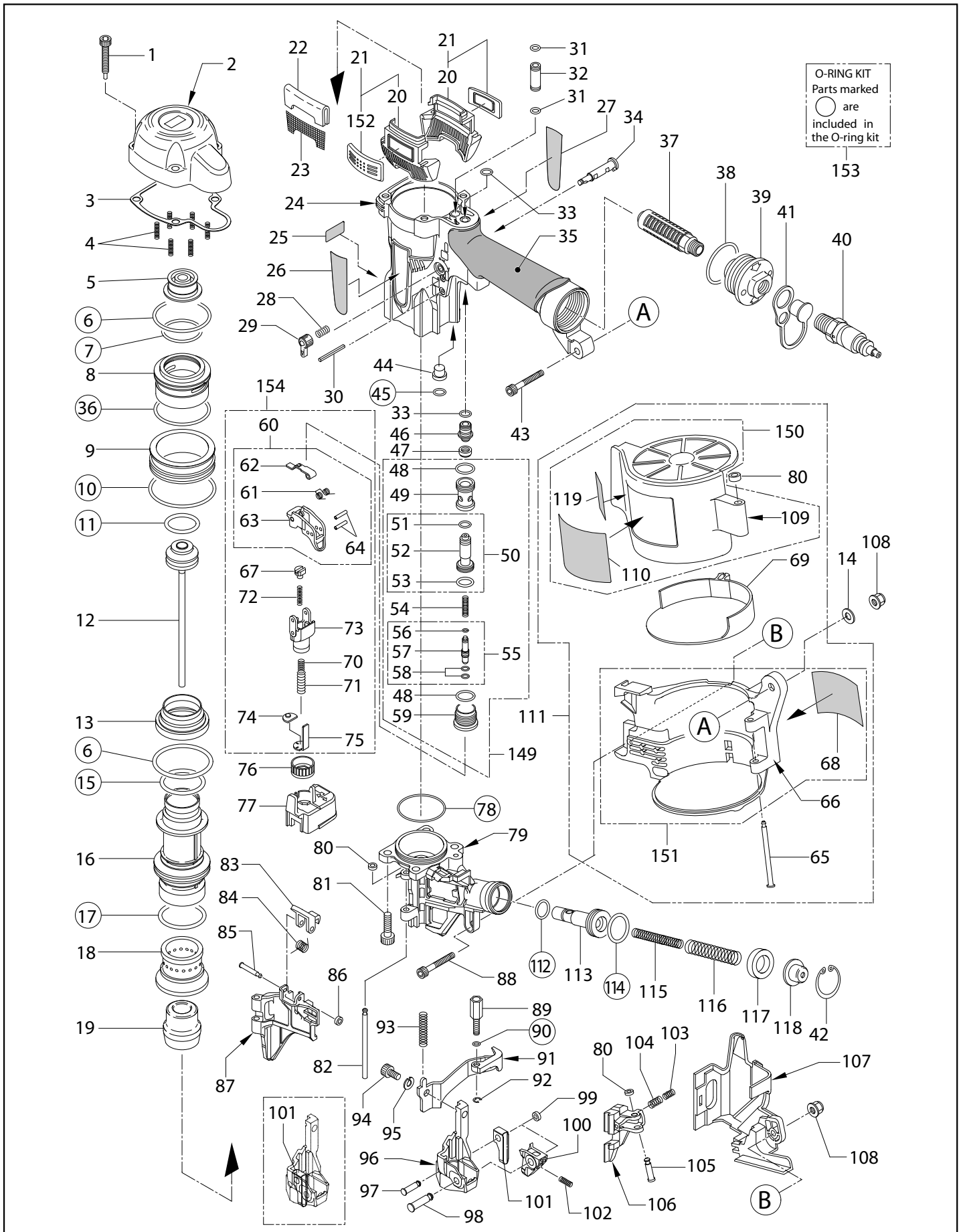


HN65J

Cloueur en rlx haute pression



Repère	Code	Description
1	HN10338	SCREW 5X36
2	HN11461	CYLINDER CAP
3	HN11363	CYLINDER CAP SEAL
4	KK23650	COMP SPRING 3650
5	HN11364	PISTON STOP
6	HH11136	O-RING ARP568-132
7	HH19752	O-RING 1A 2X31.5
8	HN11366	HEAD VALVE PISTON
9	HN11367	HEAD VALVE GUIDE
10	HH14904	O-RING AS 568-032
11	HH11805	O-RING P22A
12	HN70121	MAIN PISTON UNIT
13	HN11370	CYLINDER SEAL
14	EE31105	PLAIN WASHER 1-6
15	HH11135	O-RING AP31.5
16	HN11368	CYLINDER A
17	HH11174	O-RING 1A P35
18	HN11369	CYLINDER B
19	HN11384	BUMPER
20	HN11374	EXHAUST COVER
21	HN81086	EXHAUST COVER UNIT
22	HN11376	FILTER B
23	HN11375	FILTER A
24	HN81085	FRAME UNIT
25	CN34309	PLASTIC SHEET LABEL (100421)
26	HN10810	NAME LABEL A
27	HN10811	NAME LABEL B
28	KK23507	SPRING 3507
29	CN35074	TRIGGER LOCK DIAL
30	FF21235	SPRING PIN 3X30
31	HH11120	O-RING ARP568-009 CN65079
32	HN11442	PIPE
33	HH19127	O-RING A 1.5X5.5
34	CN35075	TRIGGER LOCK LEVER
35	HN10379	GRIP COVER
36	HH14906	O-RING AS 568-133
37	TA17024	FILTER A
38	HH19102	O-RING 1A 2.4X31.8 T29011(REPLACES TA15265)
39	HN10517	END CAP
40	TT05425	AIR PLUG H-FPM
41	HN10316	END PLUG CAP
42	JJ22408	C-RING 24
43	BB40405	BOLT 5X25
44	HN10820	FEED NOZZLE
45	HH19722	O-RING A1.5X5
46	HN10043	PILOT CAP
47	HN10018	PILOT SEAL
48	HH12105	O-RING 1A 1.5 X 12.8 N5521
49	HN10016	TRIGGER VALVE HOUSING
50	HN81098	PILOT VALVE ASSY
51	HH11208	O-RING BP6
52	HN10017	PILOT VALVE
53	HH11132	O-RING 1AP10A CN65072
54	KK23619	COMP. SPRING 3619
55	HN81099	TRIGGER VALVE STEM ASSY
56	HH19707	O-RING A1.4X2.5
57	HN11436	TRIGGER VALVE STEM
58	HH19214	O-RING 1B 1.5X3
59	HN10019	TRIGGER VALVE CAP
60	HN80079	TRIGGER ASSY

Repère	Code	Description
61	KK33300	SPRING 3300
62	HN10100	CONTACT LVER
63	HN10403	TRIGGER
64	FF22402	SPRING PIN 3X16 (LIGHT LOAD)
65	FF41526	PIN 1526
66	HN11552	MAGAZINE
67	HN11420	ARM GUIDE PIN
68	HN11554	CAUTION LABEL
69	CN34273	MAGAZINE SPACER
70	KK23735	COMPRESSION SPRING 3735
71	KK23736	COMPRESSION SPRING 3736
72	KK23129	COMPRESSION SPRING 3129
73	HN11418	ARM GUIDE
74	HN10357	CONTACT BUMPER
75	HN11435	CONTACT ARM A
76	HN10026	ADJUST DIAL
77	HN11389	ADJUST SPACER
78	HH14164	O-RING AS 568-030
79	HN11411	NOSE
80	EE39602	WASHER 7
81	BB40213	BOLT 6 X 25
82	FF31250	STRAIGHT PIN 1250
83	CN33679	DOOR LUTCH
84	KK33353	SPRING 3353
85	FF41599	PIN 1599 (REPLACES FF41587)
86	EE39609	RUBBER WASHER 1.8X6X2
87	HN11413	DOOR
88	BB40407	BOLT 5 X 20
89	HN11417	CONTACT BOLT
90	HH11903	O-RING 1A 1.2 X 4 T29051(REPLACES TA15277)
91	HN70119	CONTACT ARM B UNIT
92	JJ10404	E-RING 3.2
93	KK23952	COPM. SPRING 3952
94	BB40412	SCREW 6MM X 12MM
95	EE11101	SPRING WASHER 2-6
96	HN11414	CONTACT NOSE
97	FF41849	STEP PIN 1849
98	FF41848	STEP PIN 1848
99	EE39620	RUBBER WASHER 4X7X2.5
100	HN11415	NAIL LEG GUIDE
101	HN11426	AIMING GUIDE LOCATOR
102	KK23933	COMP. SPING 3933
103	KK23788	COMP. SPRING 3788
104	KK23710	COMP. SPRING 3710
105	FF41817	STEP PIN 1817
106	HN11412	FEED PAWL
107	HN11428	ARM COVER
108	CC00401	ELASTIC STOP NUT M5
109	HN11553	MAGAZINE CAP
110	HN11551	WARING LABEL A
111	HN81075	MAGAZINE ASSY
112	HH11113	O-RING AP9 N5528
113	HN11390	FEED PISTON
114	HH11106	O-RING AP16
115	KK23627	COMP. SPRING 3627
116	KK23896	COMP. SPRING 3896
117	CN32093	FEED PISTON STOP
118	HN10299	SPRING COLLER
119	HN11555	WARNING LABEL B
149	HN81104	TRIGGER VALVE KIT

Repère	Code	Description
150	HN81093	MAGAZINE CAP ASSY
151	HN81094	MAGAZINE ASSY
152	HN11373	PROTECTOR
153	HN81090	O-RING KI
154	HN81092	ARM GUIDE KIT