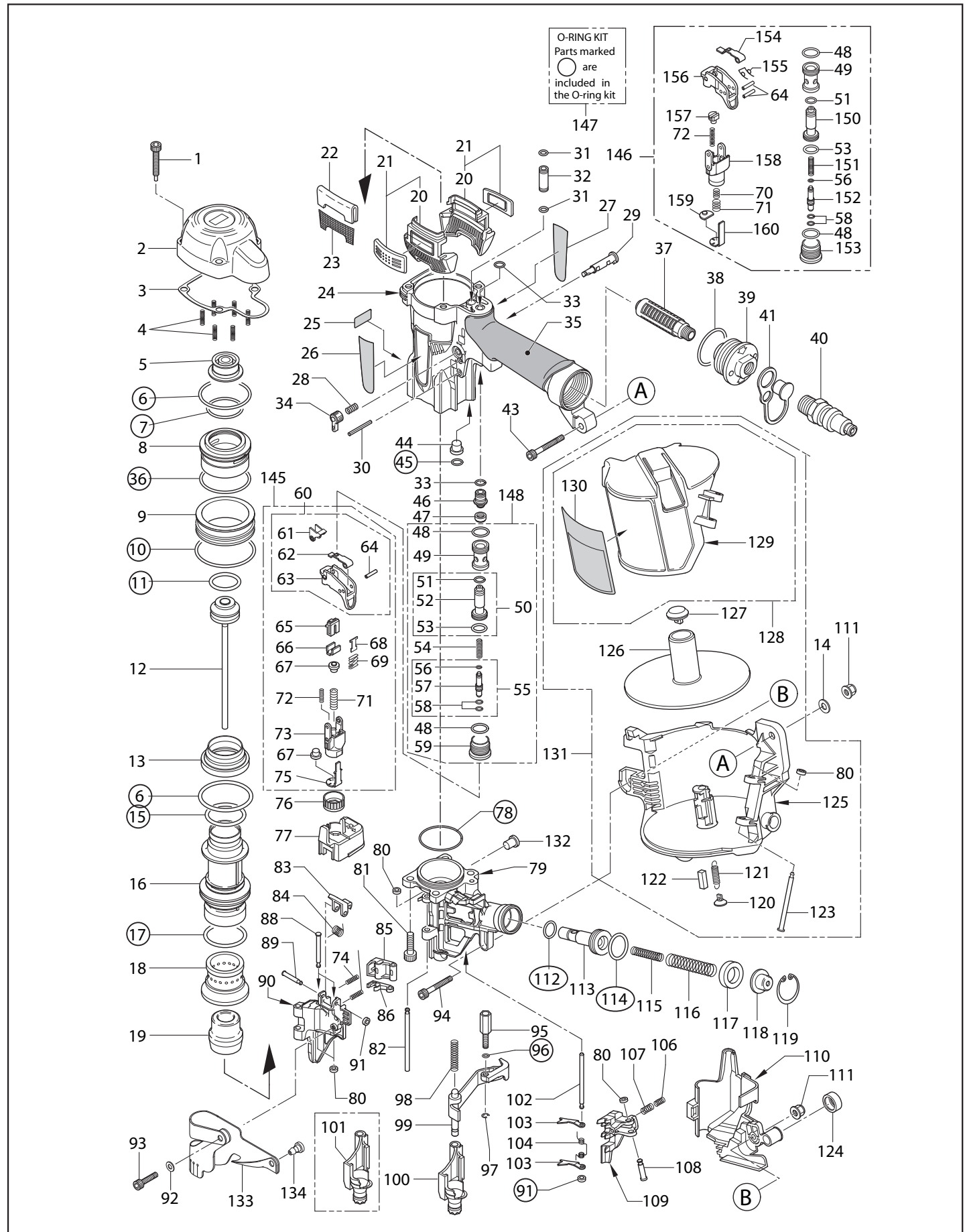


# HN65

## HIGH PRESSURE COIL NAILER



## Liste de pièces HN65 Powerlite

N°	Code	Description
1	HN10338	SCREW 5X36
2	HN11467	CYLINDER CAP
3	HN11363	CYLINDER CAP SEAL
4	KK23650	COMP SPRING 3650
5	HN11364	PISTON STOP
6	HH11136	O-RING ARP568-132
7	HH19752	O-RING 1A 2X31.5
8	HN11396	HEAD VALVE PISTON
9	HN11367	HEAD VALVE GUIDE
10	HH14904	O-RING AS 568-032
11	HH11805	O-RING P22A
12	HN70108	MAIN PISTON UNIT
13	HN11370	CYLINDER SEAL
14	EE31105	PLAIN WASHER 1-6
15	HH11135	O-RING AP31.5
16	HN11397	CYLINDER A
17	HH11174	O-RING 1A P35
18	HN11369	CYLINDER B
19	HN11384	BUMPER
20	HN11374	EXHAUST COVER
21	HN81086	EXHAUST COVER UNIT
22	HN11376	FILTER B
23	HN11375	FILTER A
24	HN11361	FRAME
25	CN34309	PLASTIC SHEET LABEL (100421)
26	HN10810	NAME LABEL A
27	HN10811	NAME LABEL B
28	KK23507	SPRING 3507
29	CN35075	TRIGGER LOCK LEVER
30	FF21235	SPRING PIN 3X30
31	HH11120	O-RING ARP568-009 CN65079
32	HN11442	PIPE
33	HH19127	O-RING A 1.5X5.5
34	CN35074	TRIGGER LOCK DIAL
35	HN10379	GRIP COVER
36	HH14906	O-RING AS 568-133
37	TA17024	FILTER A
38	HH19102	O-RING 1A 2.4X31.8 T29011(REPLACES TA15265)
39	HN10517	END CAP
40	TT05416	AIR PLUG
41	HN10316	END PLUG CAP
43	BB40437	HEX. SOC. HD. CAP SCREW
44	HN10820	FEED NOZZLE
45	HH19722	O-RING A1.5X5
46	HN10043	PILOT CAP
47	HN10018	PILOT SEAL
48	HH12105	O-RING 1A 1.5 X 12.8 N5521
49	HN10016	TRIGGER VALVE HOUSING
50	HN81064	PILOT VALVE ASSY
51	HH11208	O-RING BP6

## Liste de pièces HN65 Powerlite

N°	Code	Description
52	HS10139	PILOT VALVE
53	HH11132	O-RING 1AP10A CN65072
54	KK23906	COMP. SPRING 3906
55	HS80013	TRIGGER VALVE STEM ASSY
56	HH19707	O-RING A1.4X2.5
57	HS10141	TRIGGER VALVE STEM
58	HH19214	O-RING 1B 1.5X3
59	HS10140	TRIGGER VALVE CAP
60	HS80014	TRIGGER ASSY
61	HS10144	CONTACT LEVER B
62	HS10143	CONTACT LEVER A
63	HS10147	TRIGGER
64	FF22402	SPRING PIN 3X16 (LIGHT LOAD)
65	HN11399	SWITCH LEVER A
66	HN10786	ARM GUIDE PLATE
67	HN10785	CONTACT BUMPER
68	HS10146	SWITCH LEVER B
69	CN34500	SPRING, LEVER
71	KK23653	COMP. SPRING 3653
72	KK23129	COMPRESSION SPRING 3129
73	HN10784	ARM GUIDE
74	KK23912	COMP. SPRING 3912
75	HN10818	CONTACT ARM A
76	HN10026	ADJUST DIAL
77	HN11389	ADJUST SPACER
78	HH14164	O-RING AS 568-030
79	HN11380	NOSE
80	EE39602	WASHER 7
81	BB40213	BOLT 6 X 25
82	FF31250	STRAIGHT PIN 1250
83	CN33679	DOOR LUTCH
84	KK33353	SPRING 3353
85	HN11463	RATCHET A
86	CN34479	LATCH B
87	KK23282	COM. SPRING 3282
88	FF41281	PIN 1281
89	FF41599	PIN 1599 (REPLACES FF41587)
90	HN11382	DOOR
91	EE39609	RUBBER WASHER 1.8X6X2
92	EE39172	WASHER 5.1X12X1.2
93	BB40427	T-BOLT 4 X 8(REPLACES TA15544)
94	BB40407	BOLT 5 X 20
95	HN11398	CONTACT BOLT
96	HH11903	O-RING 1A 1.2 X 4 T29051(REPLACES TA15277)
97	JJ10404	E-RING 3.2
98	KK23952	COPM. SPRING 3952
99	HN70111	CONTACT ARM B UNIT
100	HN81108	CONTACT NOSE N ASSY
101	HN81107	CONTACT NOSE V ASSY
102	FF31602	PIN 1602

## Liste de pièces HN65 Powerlite

N°	Code	Description
103	HN10129	CHECK PAWL
104	KK33221	TORSION SPRING 3221
106	KK23788	COMP. SPRING 3788
107	KK23710	COMP. SPRING 3710
108	FF41817	STEP PIN 1817
109	HN11462	FEED PAWL
110	HN11385	ARM COVER
111	CC00401	ELASTIC STOP NUT M5
112	HH11113	O-RING AP9 N5528
113	HN11390	FEED PISTON
114	HH11106	O-RING AP16
115	KK23724	COMP. SPRING 3724
116	KK23173	SPRING 3173
117	CN32093	FEED PISTON STOP
118	HN10388	SPRING COLLAR
119	JJ22408	C-RING 24
120	CN30602	SPRING HOOK
121	KK13051	SPRING 3051
122	CN30601	SPACER CN65091
123	FF41287	PIN 1287
124	HN10805	CONTACT TIP
125	CN35388	MAGAZINE
126	HN10389	NAIL SUPPORT
127	CN31963	POST CAP
128	HN81089	MAGAZINE CAP ASSY
129	CN35651	MAGAZINE COVER
130	HN11464	WARNING LABLE
131	HN81059	MAGAZINE ASSY
132	HN81013	MAGNET UNIT
133	HN11386	DUST COVER
134	CN31083	HOOK, DUST COVER
145	HN81110	ARM GUIDE KIT
146	HN81091	SEQUENTIAL TRIP KIT
147	HN81090	O-RING KI
148	HS80007	TRIGGER VALVE KIT
149	TA81014	STEP PIN KIT
150	HN10017	PILOT VALVE
151	KK23619	COMP. SPRING 3619
152	HN10353	TRIGGER VALVE STEM
153	HN10019	TRIGGER VALVE CAP
154	HN10100	CONTACT LVER
155	KK33300	SPRING 3300
156	HN10403	TRIGGER
157	HN11420	ARM GUIDE PIN
158	HN11418	ARM GUIDE
159	HN10357	CONTACT BUMPER
160	HN10401	CONTACT ARM A