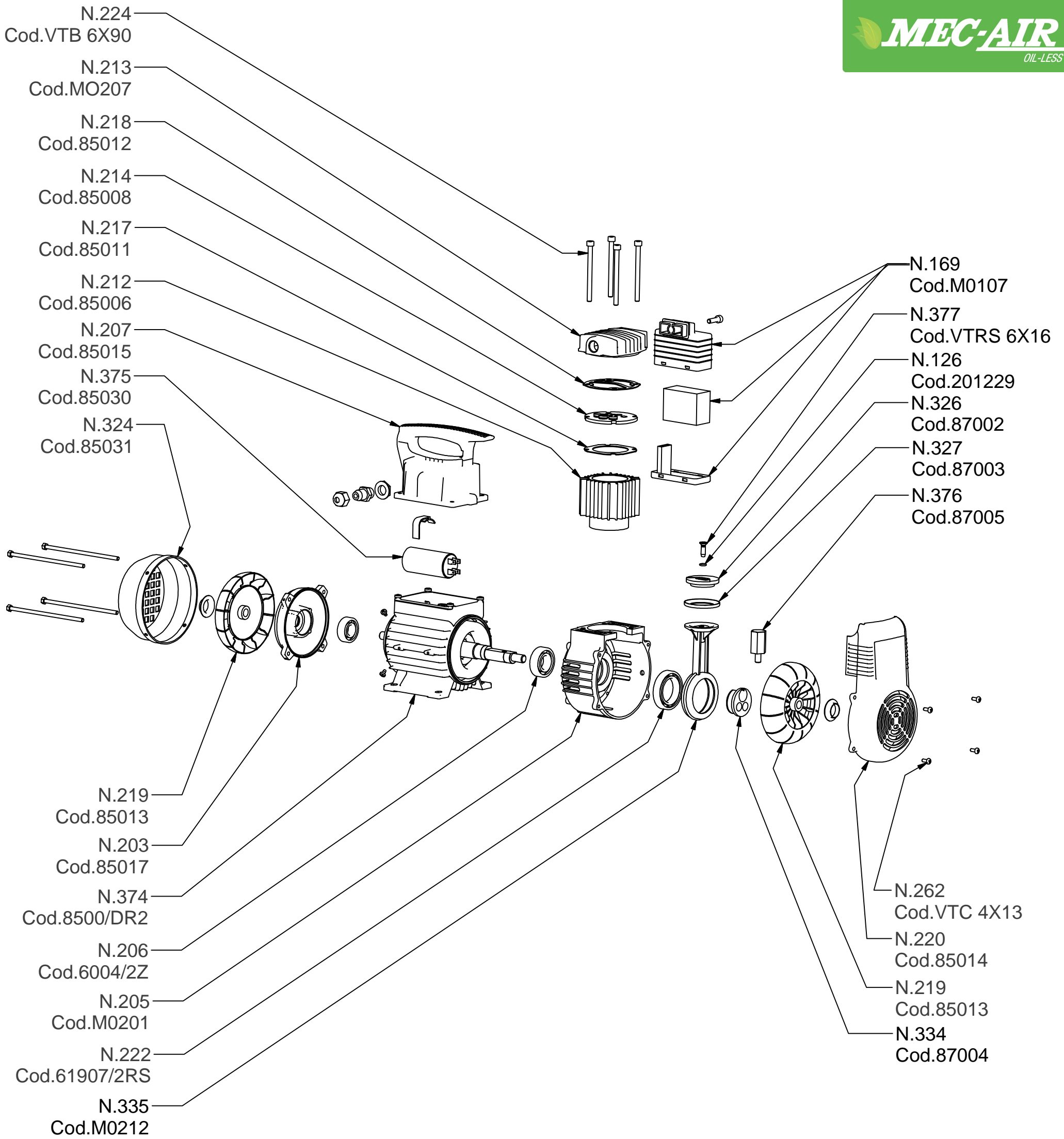


AC11005 AERFAST-MECAIR compressor - Compressing head



AC11005 AERFAST-MECAIR compressor - Spare parts list



N.	DESCRIPTION	Qty	CODE
16	UNIVERSAL QUICK COUPLER Mod. "5500" PVC RING M.1/8 THREADED FITTING IN BRASS NICKEL PLATED	1,00	5500#0102M010T
28	TYRE CONTROL PRESSURE GAUGE RADIAL CONNECTION D.40 1/4 PSI/BAR 0-16	1,00	203523
46	FITTING for PRESSURE SWITCH NUT WITH O-RING	1,00	83039
63	FITTING Mod. 400 3/8 MM	1,00	608123
67	NUT for PRESSURE SWITCH 3/8 F.	1,00	83038
97	DRAIN COCK Mod. 025 1/4	1,00	602502
108	REGULATOR	1,00	41030302
109	TYRE CONTROL PRESSURE GAUGE RADIAL CONNECTION D.40 1/8 PSI/BAR 0-12	1,00	203522
114	RUBBER HOSE "RILSAN" 4X6 PA12	0,00	KRR004/100
116	SAFETY VALVE 1/4 TA6 10.5+10%	1,00	82098
126	GASKET -OR SILICONE 70 RED 9.25X1.78	1,00	201229
169	ASSEMBLED INTAKE FILTER FOR C330	1,00	M0107
195	PLUG G/PVC 71R H03VV-F 3G0.75 1500mm 110/55/45	1,00	85025
202	MOTOR CASE MEC 63C B3	1,00	85016
205	CRANKCASE 85001 Drawing Nr.1515251033 (B110)	1,00	M0201
206	BALL BEARING 6004 2z SRL 150° CO-EMQ	1,00	6004/2Z
207	HANDLE FOR MOTOR in PVC (B110) Drawing Nr. 1515251022	1,00	85015
212	UNREFINED CYLINDER (B110) - OXID TREATMENT Drawing Nr. 1515251036	1,00	85006
213	TOOLED HEAD 85007 -B110 Draw. Nr.1515251034	1,00	M0207
214	ASSEMBLED VALVE PLATE FOR B110 Drawing Nr. 151525009	1,00	85008
217	GASKET FOR CYLINDER (B110)	1,00	85011
218	GASKET FOR HEAD (B110)	1,00	85012
219	IMPELLER MEC 63 (B110 special) Drawing Nr.1515251024	1,00	85013
219	IMPELLER MEC 63 (B110 special) Drawing Nr.1515251024	1,00	85013
220	IMPELLER COVER (B110) Drawing Nr.1515251023	1,00	85014
222	BALL BEARING 61907 2RS SRL 150° CFC	1,00	61907/2RS
224	SCREW TCEI 8.8 UNI 5931 M6x85 zinc.	4,00	VTB 6X90
230	NIPPLE 14X1/4	1,00	607004#NI
241	RED SILICONE PIPE 70 Sh 7x11	0,25	201622
242	SLEWING NUT 3/8 E21	2,00	403604
246	NUT 6S UNI 5589 M6	4,00	DADO/6/M
253	PRESSURE SWITCH "CONDOR" MDR1/11 7/9 bar F1/4 PG11G/ZK EV1S	1,00	213635
256	RUBBER FEET MV for B110	4,00	85023/1
257	NON RETURN VALVE (B110) 1/4M-3/8M. d.10 OA00101	1,00	83026/2
258	GROWER D.6 zinc. UNI 1751	4,00	RON E6
262	SCREW M4.8x13 zinc.	4,00	VTC 4X13
267	FITTING -T- 1/4 FMF	1,00	608202
273	SLEWING FITTING D.8 FOR NUT 3/8	2,00	403528
318	TANK 5 LT. FOR B110 10 BAR DRAWING 151525037 WHITE COLOUR RAL 9010	1,00	201526
320	FITTING -T- 1/8 MFF	1,00	608211
321	SILICONE PIPE ASSEMBLED L. 25 cm. WITH FITTINGS	1,00	85202
324	IMPELLER COVER MEC 90 PVC	1,00	85031

AC11005 spare parts list



N.	DESCRIPTION	Q.TY	CODE
326	COVER OF BALANCING PISTON (B110) Drawing Nr. 1515251089	1,00	87002
327	PISTON RING FOR B110 PUMP	1,00	87003
330	SCREW TE 8.8 UNI 5739 M6x20 zinc.	4,00	VTE 6X20
334	WORKED CRANKSHAFT draw. 1515251039(B110) (209)	1,00	87004
335	PISTON (B110) 87001 Drawing Nr. 515251099	1,00	M0212
374	MOTOR WINDING SPARE PART 63 B3 S/P KW0.45/4 H.70	1,00	8500/DR2
375	CAPACITOR MF 35 VL450 CAV.U.180 FF 45x92	1,00	85030/1
376	WORKED CRANKSHAFT draw. 1515251039(B110) (209)	1,00	87005
377	SCREW 6X16	1,00	VTRS 6X16